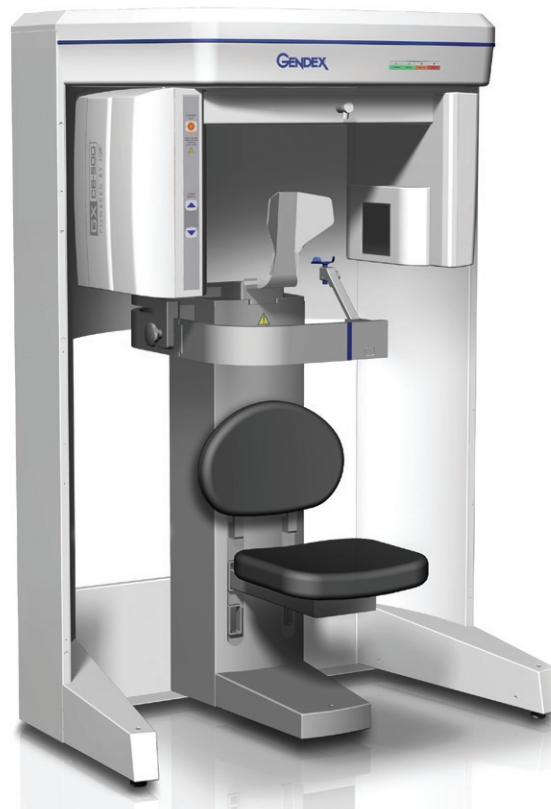


GX CB-500[™]
POWERED BY i-CAT[®]



NEW *from* Genex!

Introducing The Latest In Cone Beam 3-D Imaging.

- ⇒ Advanced 3-D Diagnostic Capabilities
- ⇒ Perfect For Implantology
- ⇒ Improved Practice Workflow

⇒ Cone Beam 3-D Imaging Systems

Panoramic X-ray Systems

Intraoral X-ray Systems

Digital Intraoral Sensors

Digital X-ray Phosphor Plates

Intraoral Cameras

Imaging Software

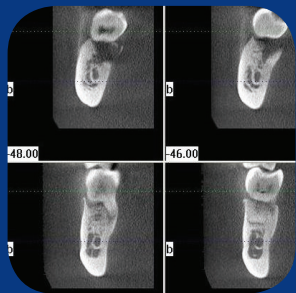
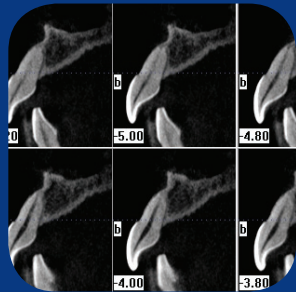
GENDEX[®]
Imaging Excellence Since 1893



Seated patient positioning to minimize movement



Immediate 3-D reconstruction of anatomy



Distortion-free, cross-sectional slices of maxilla and mandible

Gendex Dental Systems
 901 West Oakton Street
 Des Plaines, IL 60018 U.S.A.
 Tel 1-888-275-5286
 www.gendex.com

Introducing the GXC-500 – The Latest In Cone Beam 3-D Dental Imaging

Gendex enters a new dimension in dental imaging with the GXC-500, powered by i-CAT®, the industry-leading technology and robust software for 3-D imaging. Featuring easy-to-use, push button controls and seated patient positioning to minimize movement, the GXC-500 offers dental professionals a unique 'medium field of view' of up to 14 cm diameter x 8 cm height – providing immediate diagnostic information on the patient to precisely plan implant treatment with exact measurements prior to surgery.

➤ Advanced 3-D Diagnostic Capabilities

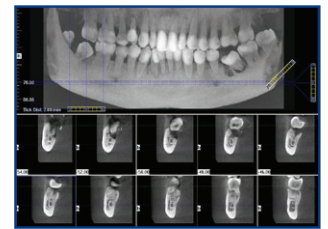
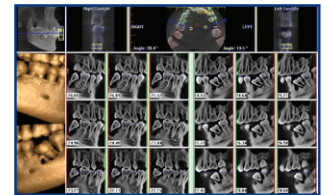
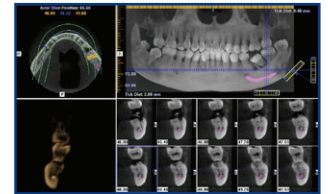
- Anatomically accurate 3-D imaging of critical anatomies
- No distortion or magnification
- Cross-sectional slices of desired location in the maxilla or mandible

➤ Perfect For Implantology

- 8 cm x 8 cm field of view includes both arches in Standard Scan mode
- 14 cm x 8 cm field of view captures maxilla and both TM joints in Extended Diameter Scan (EDS) mode
- Nerve marking estimation to easily identify nerve canal
- Plus, traditional digital panoramic images

➤ Improved Practice Workflow

- Fast 8.9 second scan in Standard mode
- Full 3-D reconstruction in less than 20 seconds
- Under 20 megabyte file sizes
- Easily share 3-D data and images with other clinicians



i-CAT Vision™ software features:

- Automatic Pan Reconstruction
- Nerve Canal Estimation
- Practice Management Interface
- PACS Interface
- DICOM 3 Compatible for 3rd Party Softwares

GXC-500 Technical Specifications

Focal Spot	0.5
Voxel Sizes	.4, .3, .25, .2, .125
Type of Sensor	Amorphous Silicon Flat Panel
Size of Panel	13 x 13 cm
Line Pairs	14 lp/cm at .2 voxel scan at the object
Grayscale (BIT)	14 bit
Shades of Gray	16384 shades of gray
Field of View	8 cm (d) x 8 cm (h) – Standard Mode 14 cm (d) x 8 cm (h) – EDS Mode
Collimation	down to 4 cm
Scan Times	8.9 sec (.3 and .4 voxel, Standard/EDS Mode) 23 sec (.125, .2 and .25 voxel, Standard Mode)
Reconstruction Times	less than 20 sec – Standard Mode less than 95 sec – EDS Mode
File Sizes	less than 20 MB – Standard Mode less than 76 MB – EDS Mode
Software	Free i-CAT Vision™ viewing and sharing software included
Footprint	48" wide x 46" deep

Specifications subject to change without notice.

